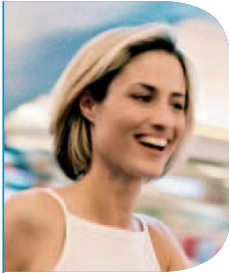


Identity Preservation Process



What Does Identity Preserved Mean?

Identity Preserved or “IP” is the term used for products which have been processed under our “Identity Preserved Programme” for non-genetically modified products. This means that the

products are derived from non-GM sources and that strict measures are in place to avoid GM contamination during all the stages of the process.

How Does Identity Preservation Work?

First we map the process flow, then we identify the risks and the control points for each of these risks (the “what if” exercise) and finally we analyze each of the control points and come up with a plan to minimize the risk of adventitious contamination.

Documentation plays a big role in the process, where records can quickly be traced to provide the source of origin of your soya protein ingredients. A third party audit by SGS Société Générale de Surveillance SA, Switzerland, verifies conformity of the programme with the EU regulations 1829/2003 and 1830/2003.

“Gold Standard” Assurance

Solae’s “Identity Preservation” system is based on the principles of HACCP and Due Dilligence. Careful monitoring of the identity, source, harvesting, transportation and the manufacturing process has been put carefully in place throughout the whole IP processing procedure.



To offer consumers the choice



Innovation through Nature

Conformance Validation

Process Audit

Independent 3rd party (SGS/Cert ID) audit of conformance to IP programme documentation

Profile Testing

Testing of the IP Process through to the finished product

Product Testing

Periodic testing of finished product batches to validate IP process effectiveness

Our Commitment

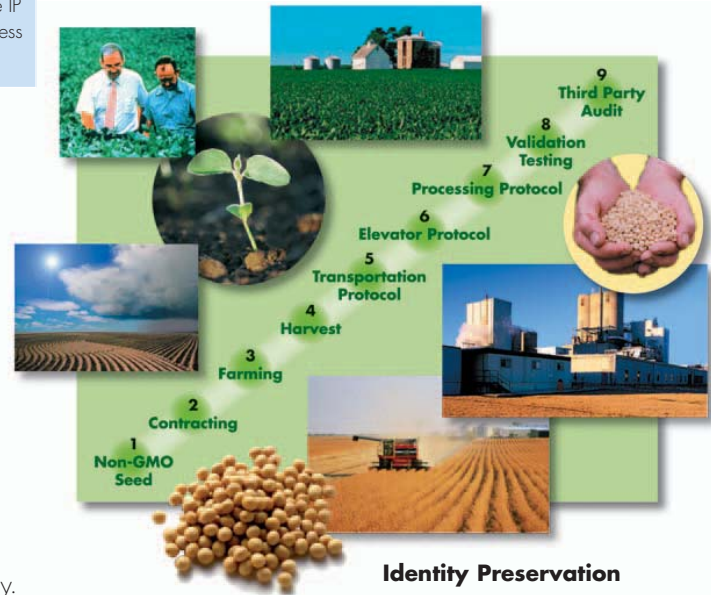
Solae is committed to a continuous improvement of all its manufacturing control procedures. Ongoing surveillance of all processes, regular on-site training of employees and regular audits back our commitment to offer high "Identity Preserved" standards for our products.

EU Regulations

Solae's IP products conform to a maximum of 0.9 % residual genetically enhanced (GMO) DNA, as analysed and provided by Solae's testing laboratory.

IP Supply Chain Protocols

Identity Preservation is a Supply Chain Process that is based on Risk Assessment and Traceability.



In accordance with EU law, all of our Identity Preserved (IP) products are validated by the Société Générale de Surveillance (SGS) not to be produced from genetically modified organisms (GMO).